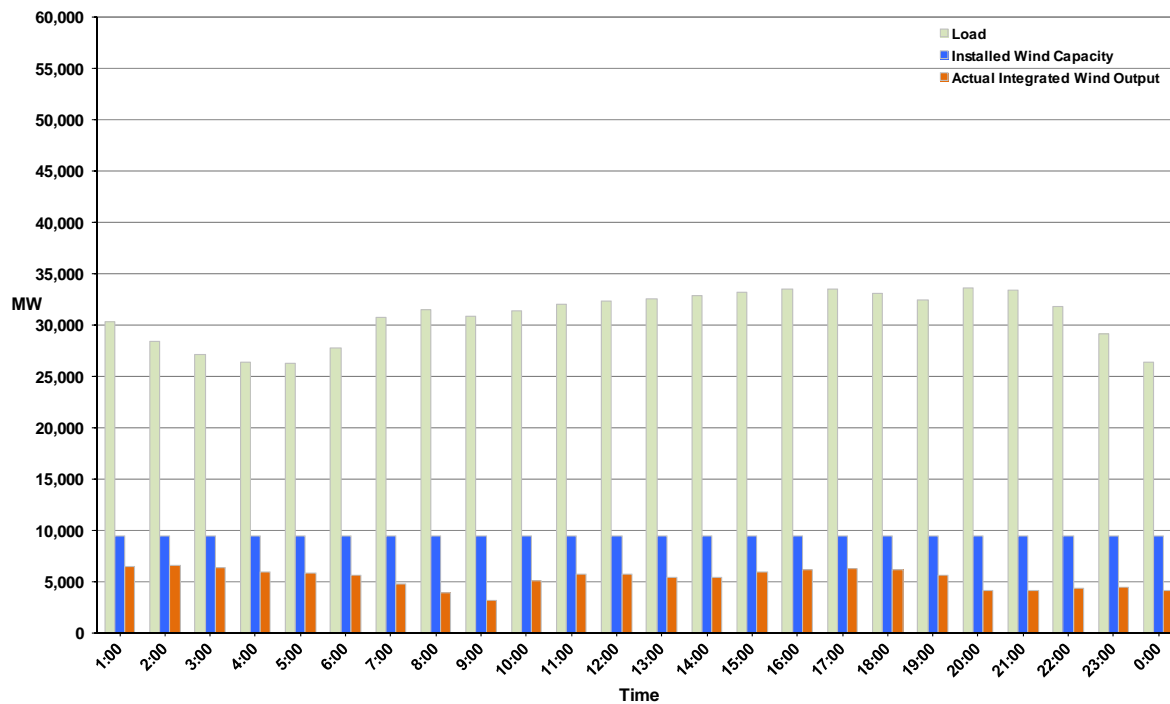




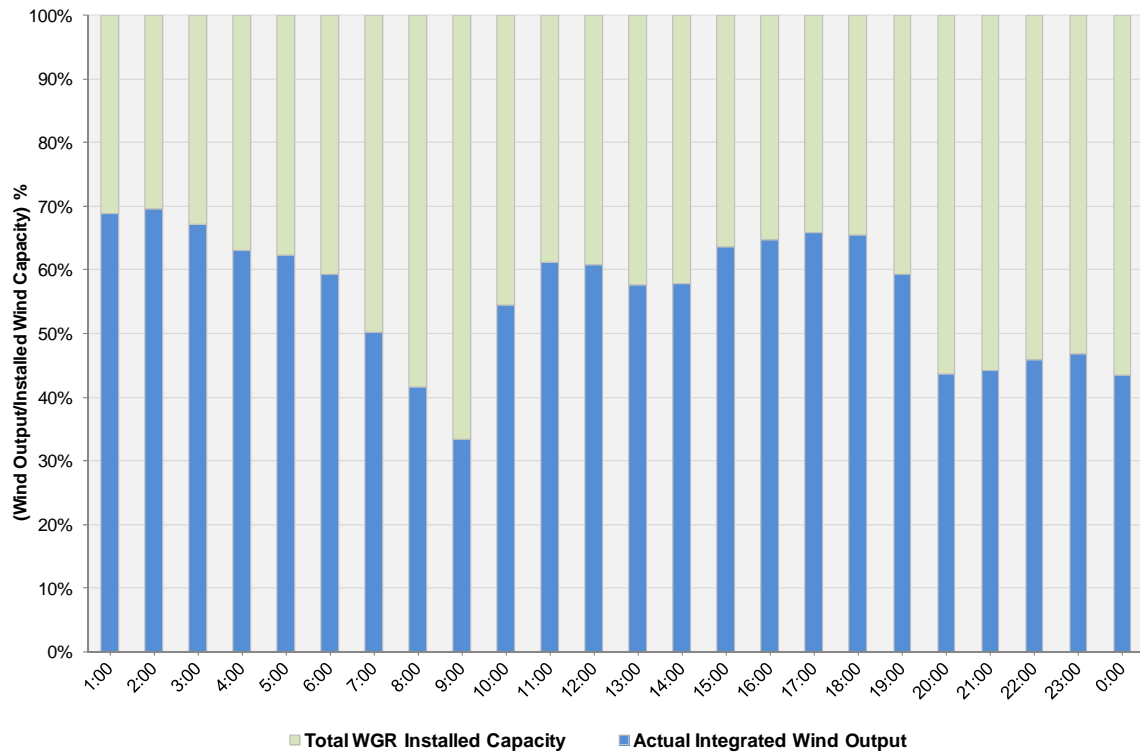
ERCOT Grid Operations Wind Integration Report: 10/18/11

Peak Load	33,659 MW
Load Peak Hour	20
Wind over Peak	4,112 MW
Wind Record 10/07/11	7,400 MW
Max Wind Value	6,839 MW
Wind Peak Time	00:33
Wind Integration %	22.74%

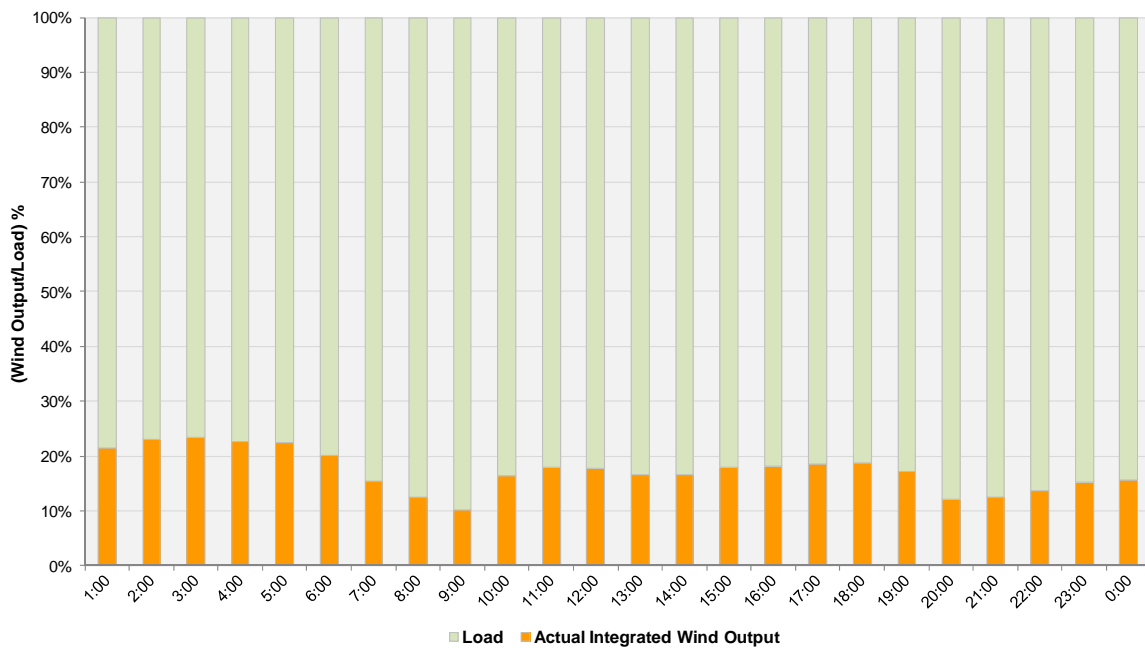
Hourly Average Actual Load vs. Actual Wind Output
10-18-2011



Actual Wind Output as a Percentage of the Total Installed Wind Capacity
10-18-2011



Actual Wind Output as a Percentage of the ERCOT Load
10-18-2011



ERCOT Load vs. Actual Wind Output 10/11/2011 - 10/18/2011

